

DECK MACHINERY

ANCHOR CHAIN



STUD LINK ANCHOR CHAIN

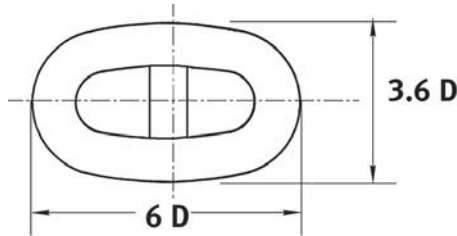
GENERAL INFORMATION

Stud Link Anchor Chain

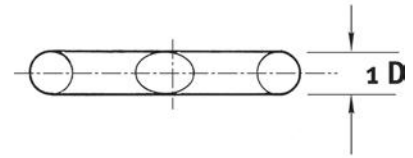
Stud Link Anchor Chain is cross-braced on each link to provide increased strength and resistance to crushing. The individual links are named Common Links, with a standard full chain length of 27.5m referred to as a shot or a cable.



Common Link (C)



Common Link (C) with Dimensions



Note: D = Chain material diameter.

Chain shots are usually joined using Kenter Joining Shackles.

Stud Link Chain is most commonly used on larger ocean going vessels such as merchant ships, commercial fishing vessels and super yachts.

Stud Link Anchor Chain conforms with Standard ISO1704 and is supplied with Lloyds (LR) certification. Other approvals are available on request.

- Available in self-colour or hot dip galvanised finish.
- Manufactured in China.



• Not suitable for lifting applications.

STUD LINK ANCHOR CHAIN

STUD LINK CHAIN STRENGTH TABLE

Strength Table For Grades U2 & U3

Chain Diameter		Grade U2 (kg)		Grade U3 (kg)	
mm	in	Proof Load	Breaking Load	Proof Load	Breaking Load
12.5	1/2	6,700	9,400	9,400	13,500
14.0	9/16	9,400	11,800	11,800	16,800
16.0	5/8	10,900	15,300	15,300	22,000
17.5	11/16	13,000	18,300	18,300	26,100
19.0	3/4	15,300	21,500	21,500	30,700
20.5	13/16	17,800	24,900	24,900	35,600
22.0	7/8	20,400	28,600	28,600	40,900
24.0	15/16	24,200	33,900	33,900	48,500
26.0	1.0	28,300	39,700	39,700	56,700
28.0	1-1/8	32,700	45,800	45,800	65,500
30.0	1-3/16	37,500	52,400	52,400	74,900
32.0	1-1/4	42,500	59,400	59,400	84,900
34.0	1-5/16	47,700	66,800	66,800	95,600
36.0	1-7/16	53,300	74,600	74,600	107,000
38.0	1-1/2	59,200	82,800	82,800	118,000
40.0	1-9/16	65,300	91,400	91,400	131,000
42.0	1-5/8	71,700	100,000	100,000	143,000
44.0	1-3/4	78,400	110,000	110,000	157,000
46.0	1-13/16	85,300	119,000	119,000	171,000
48.0	1-7/8	92,600	130,000	130,000	185,000
50.0	2.0	100,000	140,000	140,000	200,000
52.0	2-1/16	108,000	151,000	151,000	215,000
54.0	2-1/8	116,000	162,000	162,000	231,000
56.0	2-3/16	124,000	174,000	174,000	248,000
58.0	2-5/16	132,000	185,000	185,000	265,000
60.0	2-3/8	141,000	198,000	198,000	282,000
62.0	2-7/16	150,000	210,000	210,000	300,000
64.0	2-1/2	159,000	223,000	223,000	319,000
66.0	2-5/8	169,000	236,000	236,000	337,000
68.0	2-11/16	178,000	250,000	250,000	357,000
70.0	2-3/4	188,000	263,000	263,000	376,000
73.0	2-7/8	203,000	285,000	285,000	407,000
76.0	3.0	219,000	307,000	307,000	438,000



Self Colour finish



Hot Dip Galvanised finish

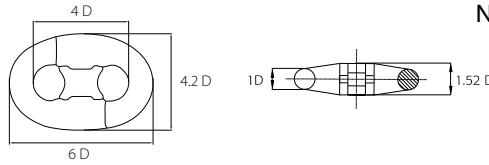


• Not suitable for lifting applications.

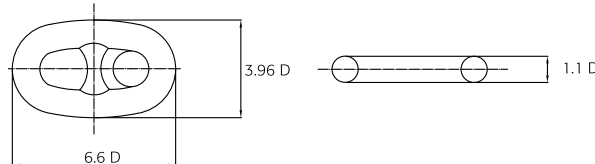
STUD LINK ANCHOR CHAIN

STUD LINK COMPONENTS

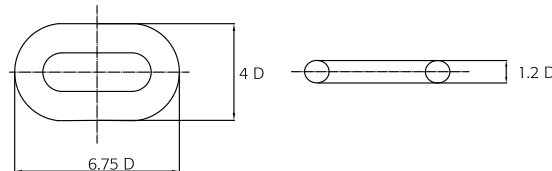
Note: D = Chain material diameter.



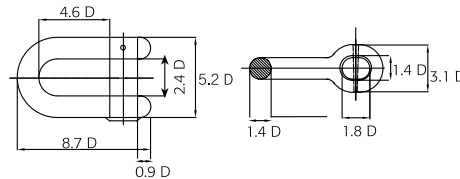
Kenter Shackle (KS): A joining shackle used to join two stud link chain elements together.



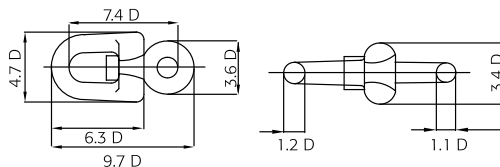
Enlarged Link (EL): The Enlarged Link is most often used to connect an End Link and Swivel to a Common Link.



End Link (E): The studless End Link is designed to accept components such as Anchor Shackles.

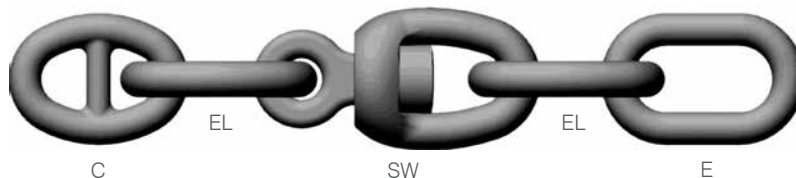


D-Type Anchor Shackle (AS): The D-Type Anchor Shackle is used to connect the stud link chain to the anchor.



Swivel (SW): The Swivel is most commonly supplied as an assembly known as a Swivel Forerunner which consists of:

Common Link (C) + Enlarged Link (EL) + Swivel (SW) + Enlarged Link (EL) + End Link (E)



The Common Link (C) connects to another Common Link (C) in the main Anchor Chain by means of a Kenter Shackle (KS). At the other end, the studless End Link (E) allows connection to an Anchor Shackle (AS).

- Components supplied with Lloyds certification.
- Available in self colour or galvanised finish.
- All stud link chain and components imported to order.
- Manufactured in China.



• Not suitable for lifting applications.

STUD LINK ANCHOR CHAIN

STUD LINK CHAIN & COMPONENT WEIGHTS

Approximate Weights Table

Diameter	Stud Link Chain Weight		Common Link	Enlarged Link	End Link	Joining Shackle Kenter	Joining Shackle Type D	Anchor Shackle Type D	Swivel
	mm	kg/m							
12.5	3.5	96	0.17	0.23	0.23	0.39	0.8	1.1	0.9
14.0	4.4	121	0.24	0.32	0.36	0.51	1.1	1.3	1.3
16.0	5.8	160	0.36	0.50	0.51	0.62	1.3	1.6	1.7
17.5	7.0	193	0.47	0.74	0.68	0.82	1.6	2.0	2.1
19.0	8.1	223	0.60	0.88	0.89	1.00	1.8	2.5	2.5
20.5	10.0	275	0.75	1.10	1.13	1.35	2.1	3.3	3.1
22.0	11.1	305	0.93	1.25	1.28	1.6	2.5	4.0	3.5
24.0	13.3	366	1.21	1.70	1.77	2.0	3.5	5.0	5.0
26.0	15.7	432	1.55	2.15	2.2	2.7	4.3	6.0	6.0
28.0	18.3	503	1.9	2.8	2.9	3.3	5.0	8.0	7.5
30.0	21.0	578	2.4	3.2	3.3	3.9	7.0	9.5	9.0
32.0	23.9	657	2.9	3.9	4.0	4.6	7.5	12.0	11.0
34.0	27.0	743	3.4	4.7	5.0	5.8	9.5	14.0	13.5
36.0	30.2	831	4.0	5.5	5.9	6.6	11.0	17.0	16.0
38.0	33.7	927	4.7	6.1	6.8	7.8	13.0	20.0	19.0
40.0	37.1	1,020	5.5	7.1	8.0	9.1	15.0	23.0	23.0
42.0	40.5	1,114	6.4	8.4	9.6	10.5	17.5	26.0	27.0
44.0	44.3	1,218	7.4	10.0	11.2	12.2	20.0	29.0	32.0
46.0	48.5	1,334	8.5	11.5	13.0	14.0	22.5	33.0	37.0
48.0	52.8	1,452	9.8	13.1	15.0	16.0	26.0	37.0	44.0
50.0	57.0	1,568	11.0	15.0	17.0	18.0	29.0	41.0	57.0
52.0	62.0	1,705	13.0	17.0	20.0	20.0	31.0	45.0	57.0
54.0	66.0	1,815	14.0	19.0	22.0	20.0	34.0	50.0	67.0
56.0	71.0	1,953	16.0	21.0	23.0	24.0	38.0	54.0	67.0
58.0	77.0	2,118	17.0	23.0	25.0	28.0	44.0	65.0	80.0
60.0	83.0	2,283	19.0	25.0	27.0	28.0	48.0	70.0	95.0
62.0	88.0	2,420	21.0	28.0	30.0	33.0	52.0	76.0	95.0
64.0	94.0	2,585	23.0	31.0	34.0	38.0	57.0	82.0	112.0
66.0	100.0	2,750	25.0	34.0	38.0	38.0	66.0	94.0	130.0
68.0	107.0	2,943	27.0	37.0	42.0	44.0	70.0	101.0	130.0
70.0	114.0	3,135	30.0	40.0	45.0	44.0	75.0	108.0	152.0
73.0	124.0	3,410	34.0	45.0	52.0	51.0	87.0	124.0	172.0
76.0	135.0	3,713	39.0	50.0	59.0	58.0	99.0	141.0	194.0

Note: Larger diameter chain and components available on request.



• Not suitable for lifting applications.

MOORING CHAIN & COMPONENTS

MOORING CHAINS

PROOF COIL CHAINS ARE NOT ALL CREATED EQUAL!

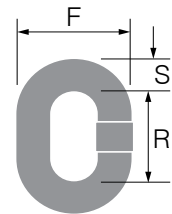
Fountom is proud to offer the highest quality regular link self colour proof coil chain manufactured by PWB Anchor, Australia in sizes 10mm through 24mm.

Regular Link Proof Coil Chain Self Colour

Product Code	PWB Item No.	Size	MWL*	Dimensions (mm)			Weight
		mm	t	S	R	F	kg/m
02609010	40029	10	0.86	9.5	43.4	35.5	1.70
02609013	40034	13	1.50	12.0	51.7	44.5	2.80
02609016	40038	16	2.31	16.0	59.6	57.3	5.30
02609020	40040	20	3.67	20.0	73.3	71.0	8.15
02609024	40042	24	5.34	24.0	87.0	84.8	11.60

Manufactured from a low grade carbon steel, this versatile range of chain is proof tested to at least twice the maximum load recommended for normal use.

- Manufactured in Australia.



Stud Link Mooring Chain

Product Code	Chain Ø	Approximate Breaking Load	Approximate Weight
	mm	t	kg/m
02600032	32	35	20
02600040	40	55	35
02600050	50	90	50



Most commonly used as bottom chain on a swing mooring to provide required weight and strength, particularly in heavy tides.

- New chain manufactured specifically for mooring or aquaculture applications.
- No variable dimensions as often found with second-hand stud link chains.
- Manufactured in China for Cookes.

- MWL: Maximum Working Loads for guidance only in selection of chain with sufficient strength for intended application.



- **Not suitable for lifting applications.**
- **Stud Link Mooring Chain is specifically manufactured for that application and is not suitable for ship's anchor chain use.**

MOORING CHAIN & COMPONENTS

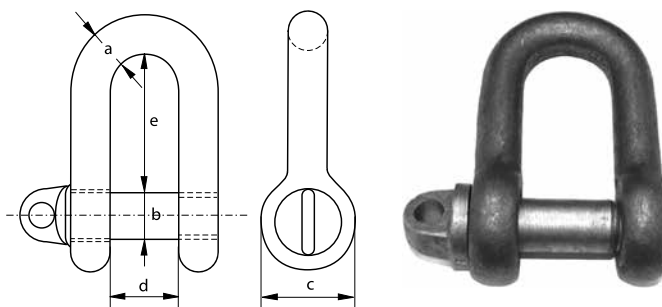
MOORING CHAIN SHACKLES

Self Colour Mild Steel Large Dee Shackles – Screw Pin

Product Code	Dimensions (mm)					Weight
	a	b	c	d	e	kg
02298016	16	16	32	32	64	0.48
02298019	19	19	38	38	76	0.95
02298022	22	22	44	44	88	1.26
02298026	25	25	50	50	100	1.85
02298029	28	28	56	56	112	2.60
02298032	32	32	64	64	128	3.68
02298035	35	35	70	70	140	5.00
02298038	38	38	76	76	152	6.50

These self-colour mild steel dee shackles are designed specifically for connection to self-colour mild steel chains in mooring applications to reduce the possibility of galvanic corrosion.

- Mild steel, grade 30.
- Uncertified.
- Self colour finish.
- Manufactured in China.



• Check with your Cookes branch if dimensions are critical for intended application.



• Commercial grade uncertified shackles must never be used for lifting applications.

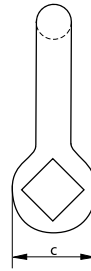
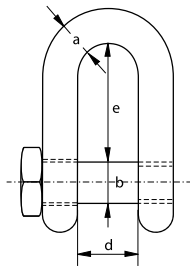
TRAWL CHAIN & COMPONENTS

MILD STEEL TRAWL SHACKLES

Self Colour Dee Trawl Shackles – Square Headed Screw Pin

Product Code	Dimensions (mm)					Weight
	a	b	c	d	e	kg
02314009	10	10	20	20	40	0.12
02314013	12	12	24	24	48	0.21
02314016	16	16	32	32	64	0.49
02314019	19	19	38	38	76	0.96
02314022	22	22	44	44	88	1.28
02314026	25	25	50	50	100	1.88
02314028	28	28	56	56	112	2.65

- Mild steel, Grade 30 material.
- Uncertified.
- Self coloured finish.
- Manufactured in China.



• Check with your Cookes branch if dimensions are critical for intended application.



• Not suitable for lifting applications.

TUNA NET CHAIN

TUNA CHAIN

Hot Dip Galvanised Tuna Net Chain

Product Code	Item No.	Dimensions (mm)			MWL**	Weight (kg)		Length (m)
		Diameter	Inside Length	Inside Width	t	m	Drum	Drum
02614010*	520140692	10	33.8	14.5	3.00	2.2	268	122
02614011*	520140792	12	34.8	19.1	3.97	3.2	291	91
02614013*	520140892	13	43.7	19.1	5.12	3.8	232	61
02614014*	520140992	14	43.2	21.6	5.50	4.5	275	61
02614016*	520141092	16	49.3	23.1	7.17	5.7	257	45

* Available on indent.

**MWL: Maximum Working Loads for guidance only in selection of chain with sufficient strength for intended application.

THE BEST CHAIN FOR A TOUGH JOB

We use high quality steel, especially formulated and heat treated for tuna fishing. Every heat treated lot is sampled and destructively tested for material strength and link elongation – assuring compliance to designed criteria. All Tuna Net Chain is then proof tested, 100%, every link.

The Tuna Net Chain is continuously hot dip galvanised to provide the deep strong protective coating you have come to expect which has over 30% more zinc per unit volume than mechanical coating.

In the hot dip process, the galvanised zinc coating is alloyed with the base steel creating a metallurgical bond that is several orders of magnitude stronger than mechanical bonding.

- Manufactured in the China.



• Not suitable for lifting applications.