

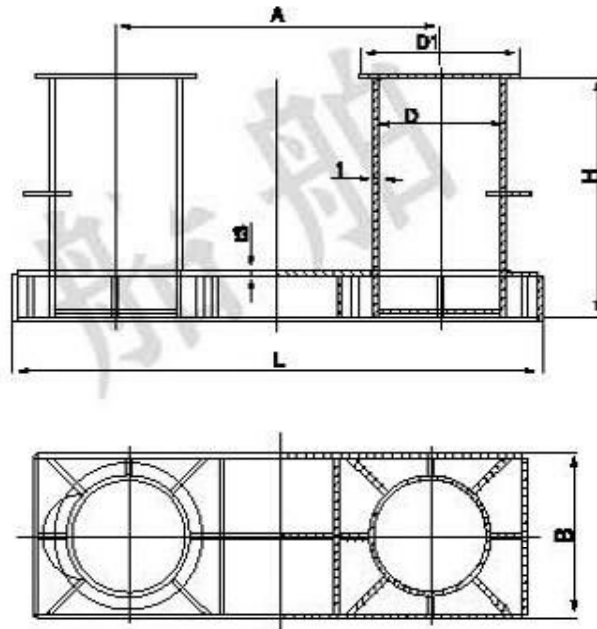
DECK MACHINERY

MARINE BOLLARD



带缆桩 Bollard

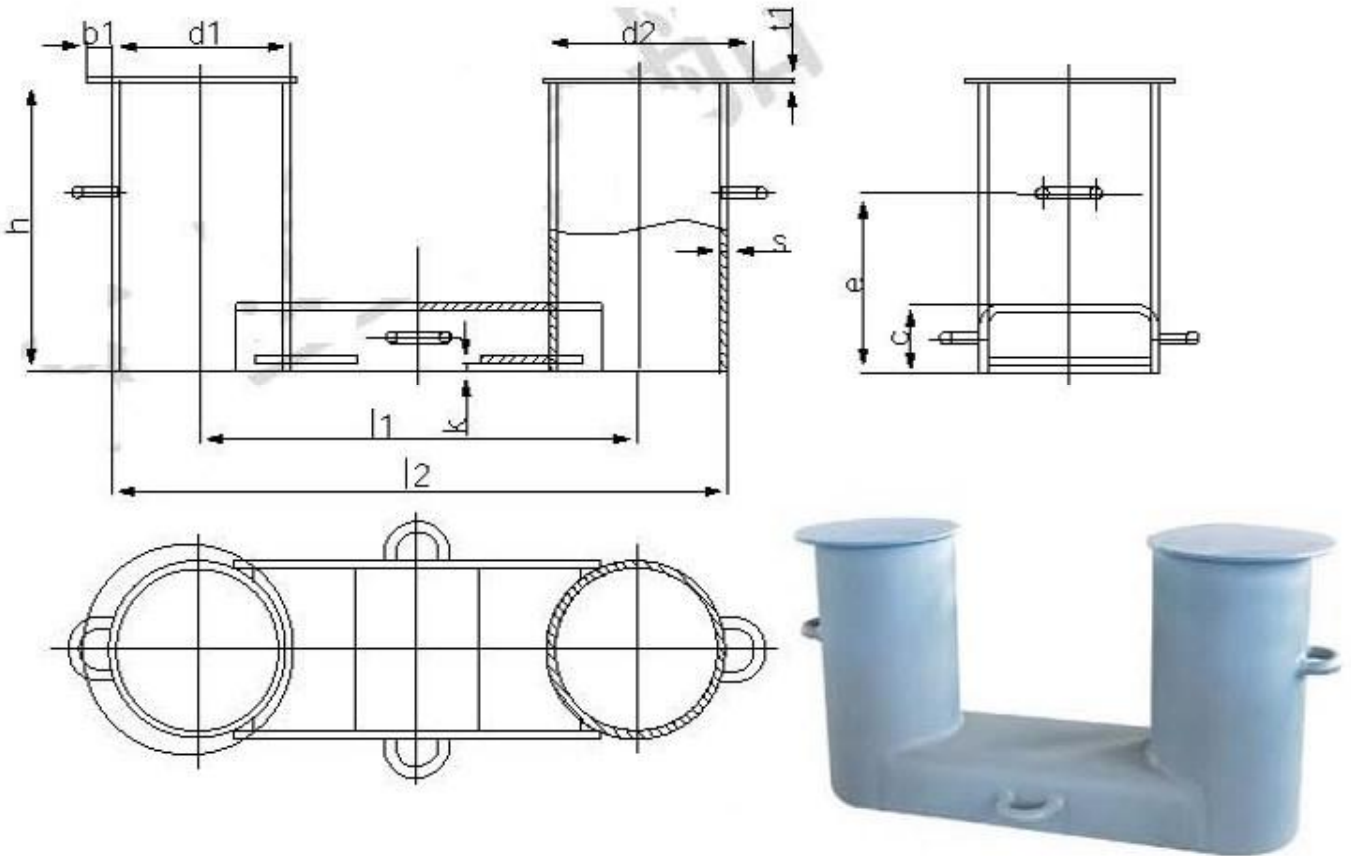
带缆桩 A型 Bollard Type A
 CB/T 554-96



公称直径 Nominal dia.	D	D1	t	A	B	L	H	t3	重量 Weight (kg)
100	114	145	10	250	165	445	196	6	19
125	140	180	10	316	195	540	248	6	29
160	168	210	10	400	225	670	316	6	45
200	218	270	10	500	290	860	378	8	80
250	273	335	11	630	360	1065	470	10	141
315	325	390	15	800	430	1300	597	12	284
355	351	420	17	890	480	1475	663	13	358
400	402	480	18	1000	550	1690	749	14	499
450	450	545	19	1130	620	1840	841	16	680
500	508	610	20	1260	690	2040	928	18	911
560	560	670	22	1380	750	2240	1025	20	1208
630	610	730	24	1570	820	2510	1152	22	1601
710	712	840	25	1760	960	2840	1294	24	2262
800	813	940	26	2000	1100	3240	1480	26	3071

带缆桩 Bollard

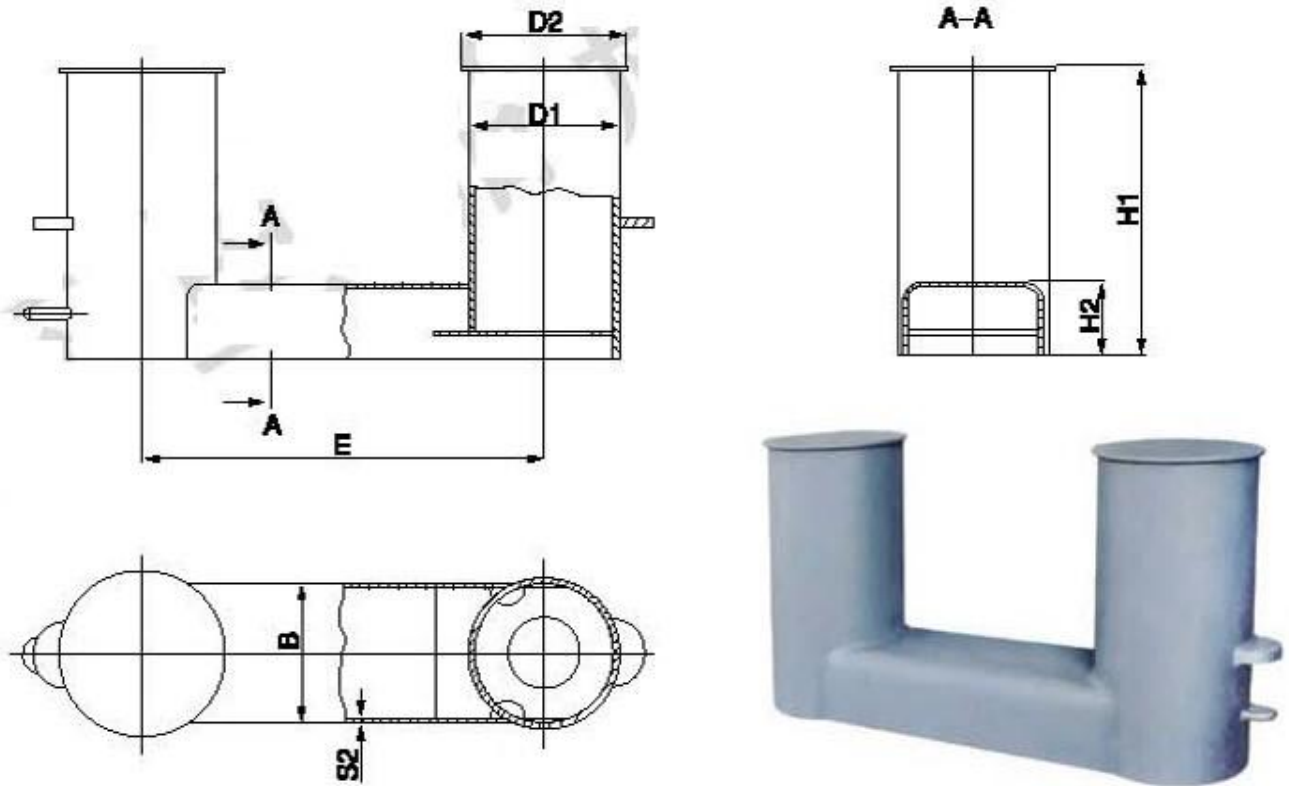
带缆桩 Bollard
 NS 2584



公称直径 Nominal dia.	a1	a2	b1	c	d2	e	h	k	l1	l2	t1	重量 Weight (kg)
125	4	5	20	80	170	165	250	15	315	455	6	25.9
180	4	5	24	90	200	185	300	15	400	565	6	37.2
200	5	6	32	100	260	250	400	15	500	719	6	75.2
250	5	6	40	125	330	315	500	15	630	903	10	124
315	6	8	48	160	390	375	600	20	800	1124	10	230
400	8	9	58	175	450	435	700	20	1000	1406	10	356
500	10	9	72	200	600	515	830	25	1250	1758	12	732
630	10	9	88	225	720	615	1000	25	1570	2180	16	1064
710	10	9	96	250	830	675	1100	25	1750	2461	16	1532

带缆桩 Bollard

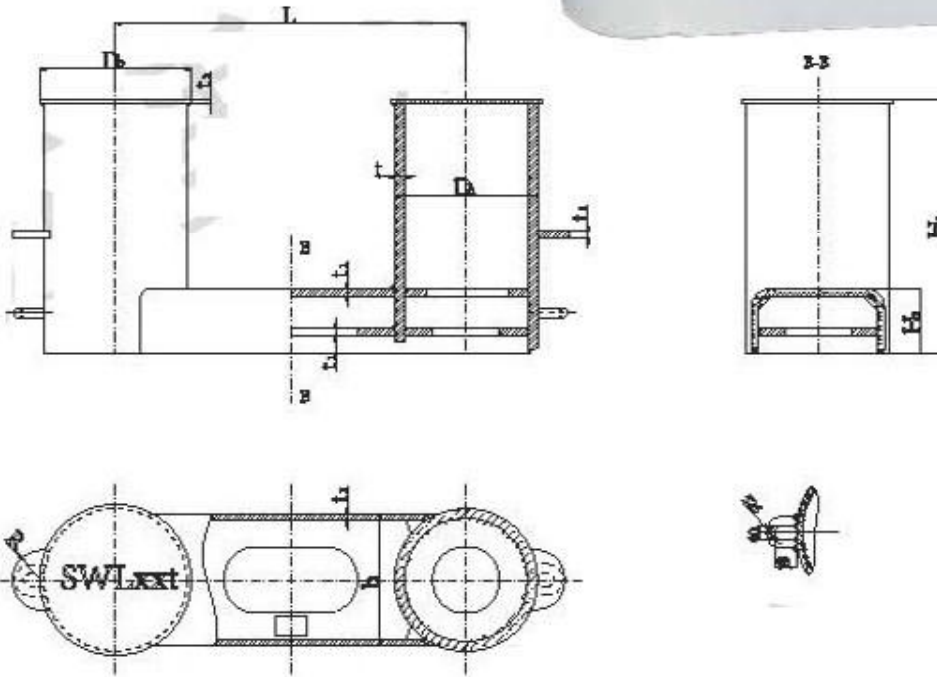
德式带缆桩 DIN Standard bollard
 DIN 82607



规格 Size	额定拉力 Rated towing pill (kN)	标准尺寸 TUBE D1	B	D2	E	H1	H2	S2	A	重量 Weight (kg)
D 1	10	139.9×6.3	130	180	430	370	105	5	4	20, 8
D 2	20	219.1×8.0	180	242	570	475	115	6	4	52, 3
D 3	32	273.0×10.0	250	300	700	570	135	8	5	99, 5
D 5	50	323.9×10.0	300	355	880	670	150	8	6	145, 4
D 8	80	355.6×14.2	330	390	1050	780	175	10	8	259, 4
D 12	120	457.0×16.0	420	490	1200	860	195	16	12	437, 0
D 20	200	508.0×17.5	470	545	1350	970	230	16		571, 0
D 32	320	559.0×20.0	530	600	1400	1000	270	16		830, 0

带缆桩 Bollard

ISO13795-2012 A型系缆桩

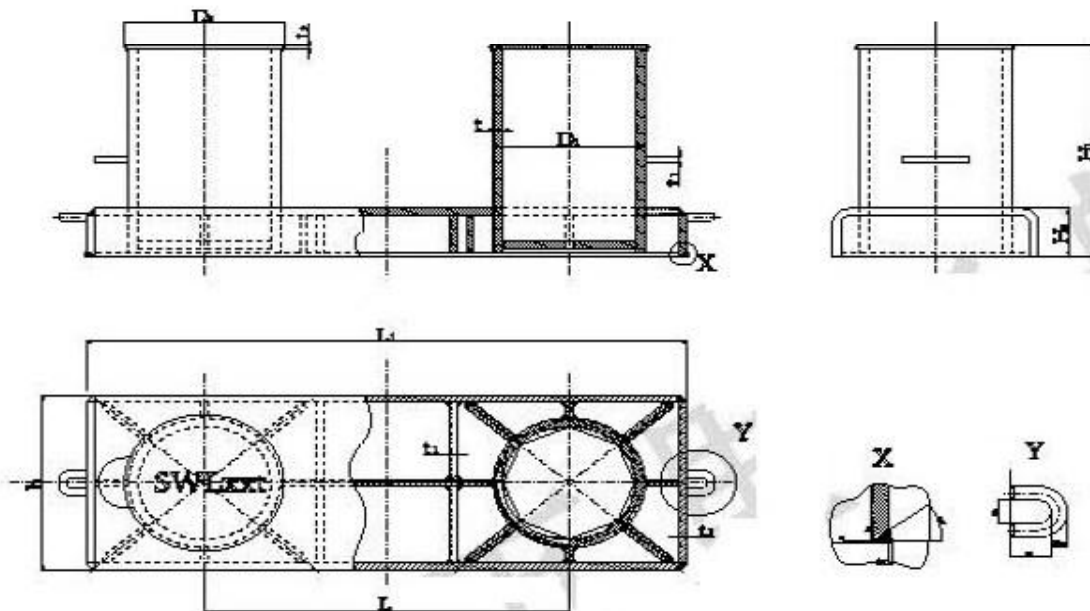


Dimensions and SWL for Type A bollards

Nominal size	D_1	D_2	H_1	H_2	b	L	t	t_1	t_2	R	SWL (one rope use)		Calculated weight (kg)
150	185.2	185	330	90	135	400	8	6	6	40	54kN	5.5t	28
200	234.5	230	395	115	205	500	8	6	6	50	82kN	8.4t	44
250A	287.4	280	505	135	250	650	12	9	8	60	135kN	14t	107
250B	287.4	280	505	135	250	650	10	8	7	60	127kN	13t	91
300A	338.5	330	600	150	290	800	21.5	16	9	70	232kN	24t	201
300B	338.5	330	600	150	290	800	12	9	9	70	185kN	19t	166
350A	355.6	340	685	175	340	899	26	18	11	80	403kN	45t	421
350B	355.6	340	685	175	340	899	14	10	9	80	246kN	25t	241
400A	406.4	400	730	185	380	1000	28	20	13	85	594kN	61t	570
400B	406.4	400	730	185	380	1000	15	11	11	85	358kN	37t	322
450A	457.2	440	770	195	425	1100	29	21	14	90	750kN	77t	712
450B	457.2	440	770	195	425	1100	16.5	11	11	90	382kN	39t	379
500A	508.0	500	830	230	480	1250	32	23	16	100	992kN	101t	960
500B	508.0	500	830	230	480	1250	16.5	11	11	100	487kN	47t	465
550A	558.8	550	900	270	530	1380	31	22	16	110	1391kN	141t	1329
550B	558.8	550	900	270	530	1380	21	16	11	110	701kN	80t	787
600	609.4	600	950	300	580	1500	33	23	16	120	1601kN	162t	1501

带缆桩 Bollard

ISO13795-2012 B型系缆桩

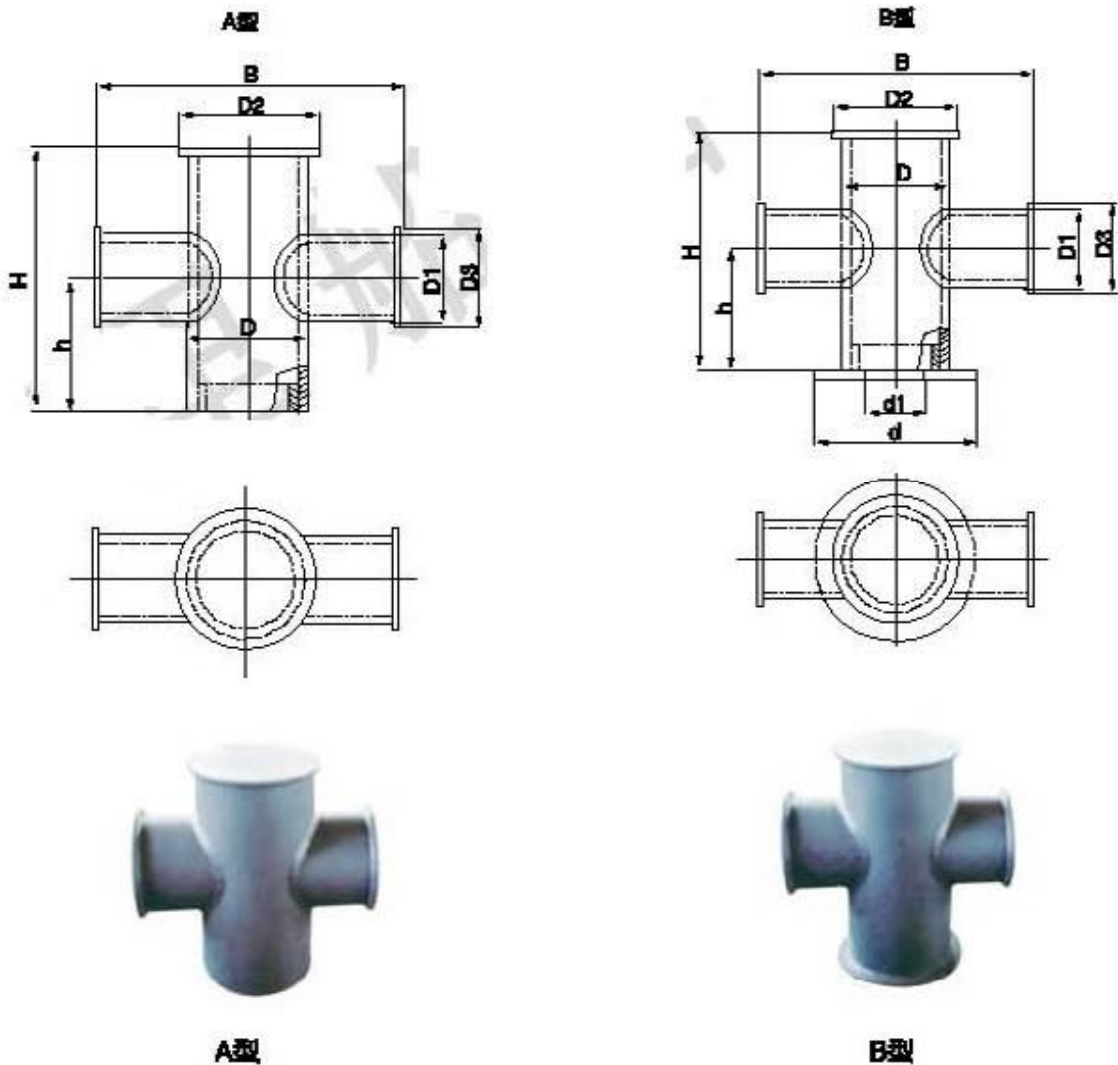


Dimensions and SWL for Type B bollards

Nominal size	D ₁	D ₂	H ₁	H ₂	b	L	L ₁	t	t ₁	t ₂	R	SWL (one rope use)		Calculated weight (kg)
120	143.2	145	320	40	225	470	470	8	8	6	40	34kN	3.3t	45
220	216.3	240	365	65	290	520	660	8	8	6	50	61kN	6.0t	66
250A	262.4	280	490	110	360	630	1465	12	13	8	60	135kN	14t	150
250B	262.4	280	490	110	360	630	1465	30	8	7	60	132kN	13t	119
300A	314.5	340	375	125	430	800	1300	21.5	20	9	70	221kN	24t	263
300B	314.5	340	375	125	430	800	1300	22	9	9	70	186kN	19t	228
350A	355.6	390	435	145	490	890	1475	26	23.5	11	80	443kN	48t	522
350B	355.6	390	435	145	490	890	1475	14	13	9	80	246kN	25t	333
400A	406.4	430	715	165	550	1090	1620	28	26	13	85	524kN	57t	795
400B	406.4	430	715	165	550	1090	1620	25	13.5	11	85	326kN	33t	441
450A	457.2	480	795	170	630	1190	1810	29	26	14	90	753kN	77t	979
450B	457.2	480	795	170	630	1190	1810	14.5	13	11	90	362kN	37t	537
500A	508.0	530	790	190	690	1250	2090	32	29	16	100	962kN	101t	1321
500B	508.0	530	790	190	690	1250	2090	14.5	13	11	100	457kN	47t	631
550A	558.8	580	840	210	750	1390	2290	38	36	16	110	1121kN	117t	1500
550B	558.8	580	840	210	750	1390	2290	24	13	11	110	781kN	81t	1089
600	609.4	630	875	225	820	1590	2490	39	36	16	120	1401kN	144t	1890

带缆桩 Bollard

船用十字形缆桩 Ship' crossing bollard
 GB/T 10108-88



公称直径 Nominal dia.	适用缆索最大破断负荷 Suitable cable's MBL KN [tf]	适用缆索最大直径 Suitable cable's max. dia.			H	B	h	D	D1	D2	D3	d	重量 Weight Kg	
		钢索 Steel wire	合成纤维索 Synthetic fiber rope	麻索 Hemp rope									A	B
150	117 [12]	13.0	30	44	480	480	280	188	114	208	158	240	A	31
													B	33
200	226 [26]	19.5	45	64	560	520	320	219	188	260	210	280	A	62
													B	66
250	382 [39]	26.0	58	80	640	610	360	273	219	310	260	340	A	98
													B	105
300	549 [55]	30.0	70	104	880	880	380	325	273	380	310	400	A	143
													B	153
350	696 [70]	34.5	77	120	720	720	420	351	273	400	314	440	A	192
													B	204

Other Marine Bollards

